

General

Critical communication installations demand dependable State-of-the-Art equipment. The SLX128 large format modular L-Band matrix unit provides the systems professional with an uncompromising combination of high performance and high reliability switching coupled together for 850-2150MHz performance (850-2450 extended version). Standard redundant hot-swap power supplies plus optional redundant system control interfaces (C3 CPU) deliver the ultimate in system reliability for critical applications.

Compact (14RU) and high performance, the unit provides a cost effective, flexible switching capacity for smaller installations. The unit can be configured up to a 128x128 delivering a non-blocking (fan out) switch array. Reduced sized versions (depopulated) are also available to reduce overall costs. Larger configurations up to 512x512 are available by cascading multiple units with a common control for simple system management.

Complete control and status of the unit is available at both the large touchscreen front panel controls or the remote interface(s). All modules and assemblies are hot swappable for simple repair or system expansion.



Front View - 14RU

Applications

- Communication installations
- Airborne surveillance systems
- Teleport and last mile installations
- Ground station and infrastructure facilities
- Receiver routing for transmit or receive

Features

- High reliability GaAs tri-stage switch technology
- SMA or BNC signal connector types
- Impedance 50 or 75 ohm
- Redundant hot-swap power supplies
- Single or dual controllers (and control ports)
- Available in Fan-Out or Fan-In (combiner) versions
- Ethernet, USB and Serial control ports
- SNMP v2, TCP/IP, and web browser control
- Built-in continuous diagnostics
- Variable (programmable) gain optional
- Field configurable serial port (RS-232C/422A/485)
- International AC power input
- LabVIEW drivers and control software available

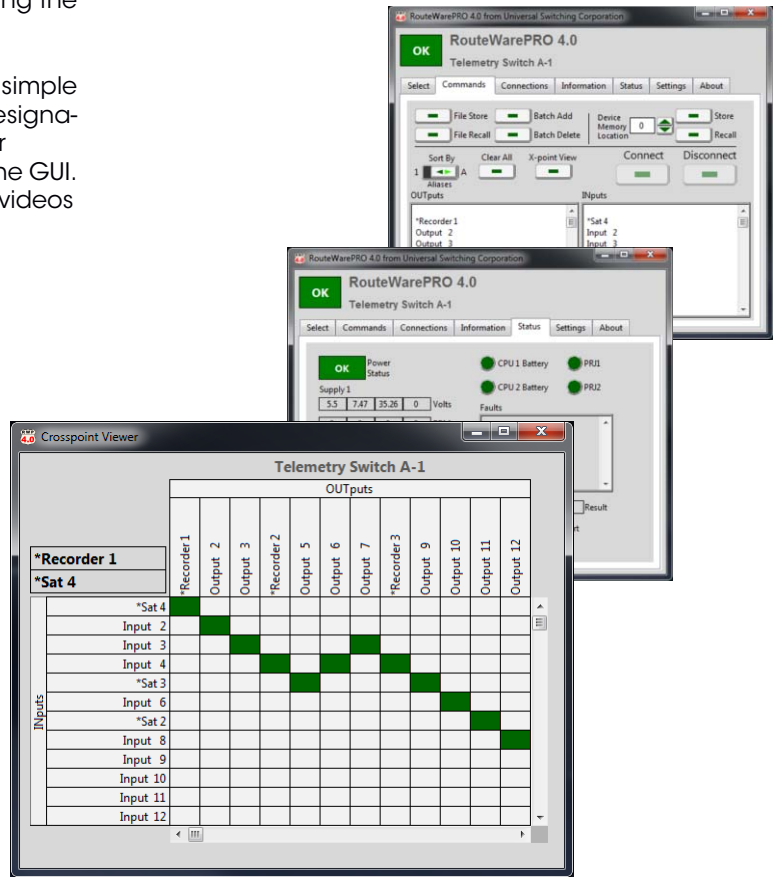
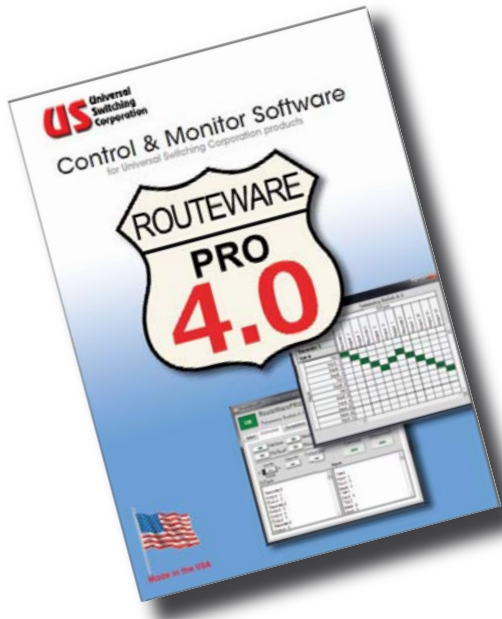


Advanced C3 Controller
 Single or Dual

System Control Software - INCLUDED

The SLX128 comes with our RouteWarePRO control software package that will get you up and running in minutes. Within minutes, you can install the software and start controlling the SLX128 switching system remotely.

The user can customize the GUI on the fly, or by editing simple text files. Screen colors, input and output channel designations, panel names and labels can be easily added or changed too, or even the title displayed at the top of the GUI. Examples are provided on the installation media and videos are on our website.



System SLX128 Specifications

Array sizeUp to 128in x 128out non-blocking array
 Switching technologySolid-state GaAs elements
 Type of systemNon-blocking full fan-out
 ArchitectureModular Tri-Stage (redundancy)
 Signal connector locationRear panel

I/O Characteristics

Frequency range850 - 2150MHz (850-2450MHz extended)
 Impedance50 ohm (75 optional)
 CouplingAC
 GainUnity (0dB +/-1dB nominal)
 Programmable gainOptional
 Flatness<+/-2.5dB
 Isolation>60dB (I/I, O/O, I/O)
 Input return loss>14dB typ
 Output return loss>14dB typ
 -1dB compression+3dBm min
 Noise Figure<24dB10
 Output IP3>10dBm
 Signal connectorSMA female, BNC optional

** NOTE 1: GPIB is also available using our GPIB-USB adapter.
 NOTE 2: If special or unique performance or features are required, the base model number is used plus a unique 5-digit suffix.

Universal Switching's policy is one of continuous development. Consequently, the company reserves the right to vary from the descriptions and specifications shown in this publication.

General Specifications

Switching speed<10ms
 Power supply sectionHot-Swap redundant supplies
 Power supply monitoringIncluded
 Serial control portSerial (RS-232C, 422A or 485 multi-drop)
 Ethernet port10/100BaseT, SNMP v2 and TCP/IP
 Serial port connectorDE-9S (D-Type female)
 USB Port2.0 **
 Redundant controllersOptional (hot swap)
 Input and output cardsHot swap
 Status LED'sFront panel
 Front panel displayTouchscreen 10.1"
 Configuration memoryFLASH
 CoolingFan assisted
 AC power requirements90-264VAC, 47-440Hz, <700 Watts
 Line protectionResettable circuit protectors
 Weight<115 lbs
 Size24.50H x 24.50D x 19.00W (14RU)
 Operating temp0 to +50C
 Non-operating temp-20 to +85C
 Humidity0 to 95% (NC @ +25C)
 MTBF>15,000 hours (estimated)
 Warranty2 years
 CertificationsCE EN61010